

MECHANICAL INTERFACE

NOTES:

1.

CAMERA MOUNTING CAN BE ACCOMPLISHED IN MANY WAYS. CUSTOMER SHOULD CONSIDER METHODS BEST SUITED FOR THE APPLICATION. TO ASSIST WITH MOUNTING, A DOVE TAIL FEATURE HAS BEEN INCORPORATED INTO THE BOTTOM OF THE CAMERA (SEE DETAIL FOR DIMENSIONS). A TRIPOD MOUNTING ADAPTER IS AVAILABLE (P/N 3231983-1).
2.

18mm LENS ONLY: IRIS:

12 TAPPED HOLES ARE PROVIDED TO ASSIST IN ACTUATING THE IRIS OPEN TO CLOSE. IN CASES WHEN THE IRIS IS TO REMAIN IN ONE POSITION PERMANENTLY IT IS RECOMMEND THAT THE IRIS ADJUSTMENT RING BE " LOCKED". THIS CAN BE ACCOMPLISHED BY THREADING A 2-56 SCREW COMPLETELY THROUGH ONE OF THE TAPPED HOLES (FINGER TIGHT ONLY TO PREVENT DAMAGE) .
3.

18mm LENS ONLY: FOCUS:

THE 18mm LENS IS SHIPPED WITH THE FOCUS PRE-SET AT THE FACTORY TO A DISTANCE OF 5 METERS. THIS IS AN OPTIMAL SETTING FOR NEARLY ALL APPLICATIONS. HOWEVER, SHOULD A CUSTOMER DESIRE TO ADJUST THE FOCUS, THE FOLLOWING STEPS SHOULD BE FOLLOWED.

A.

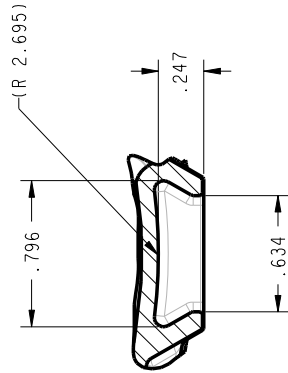
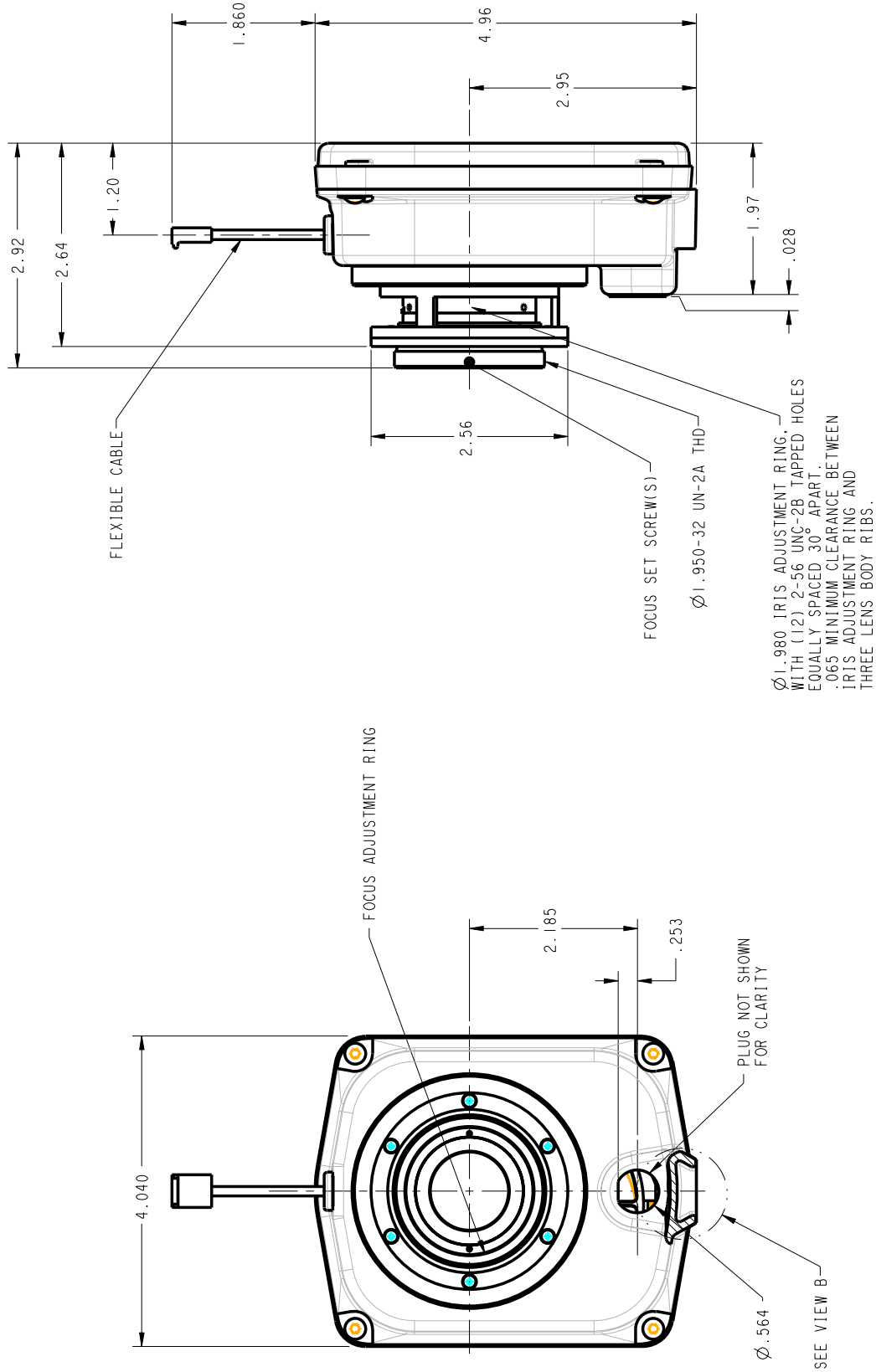
LOOSEN THE FOCUS SET SCREW(S) LOCATED ON THE PERIMETER OF THE THREADED FRONT BARREL.

B.

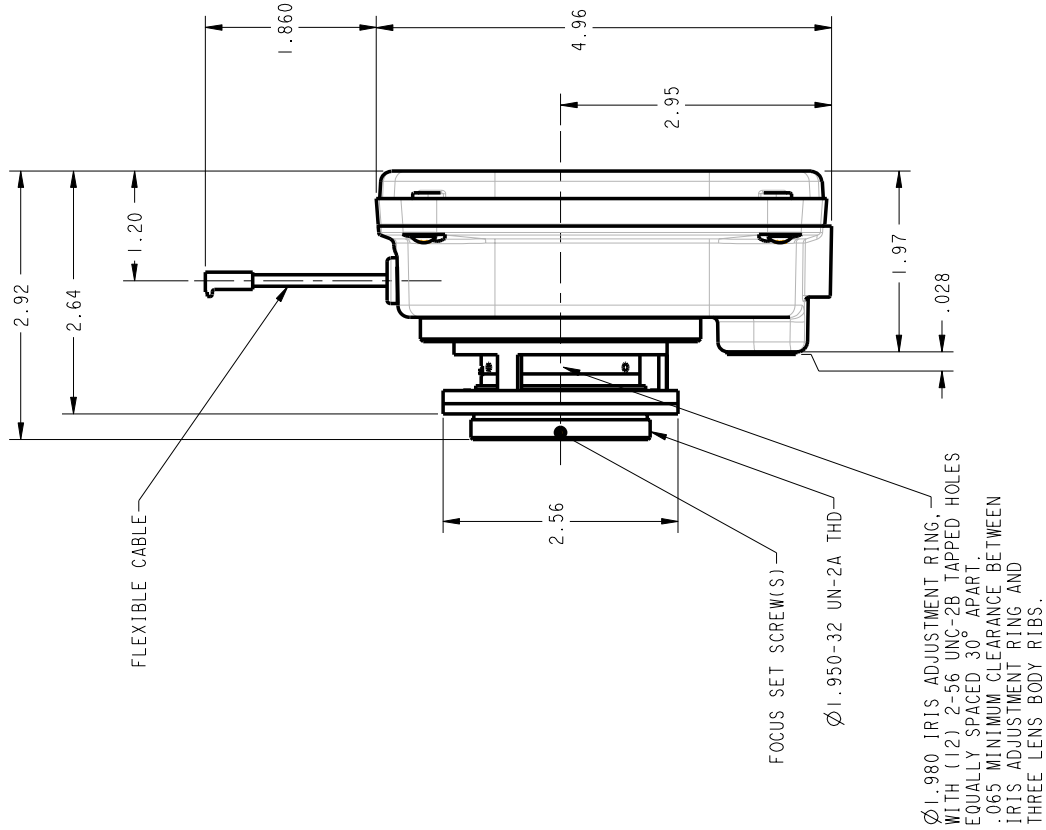
ROTATE THE FOCUS ADJUSTMENT RING CLOCKWISE FOR FAR FOCUS OR COUNTER CLOCKWISE FOR NEAR FOCUS. USE SPANNER WRENCH TO ROTATE THE FOCUS ADJUSTMENT RING.

C.

ONCE FOCUS IS SET, RE-TIGHTEN THE FOCUS SET SCREW(S) . TORQUE FOCUS SET SCREW TO 20 in-oz



VIEW B
SCALE: 2/1

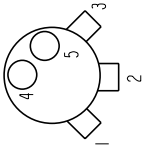


RAYTHEON COMMERCIAL INFRARED DALLAS, TEXAS	DWG NO SI3261544	DATE	SCALE 1/1	DRAWING NO SI3261544	REV -

8	7	6	5	4	3	2	1
---	---	---	---	---	---	---	---

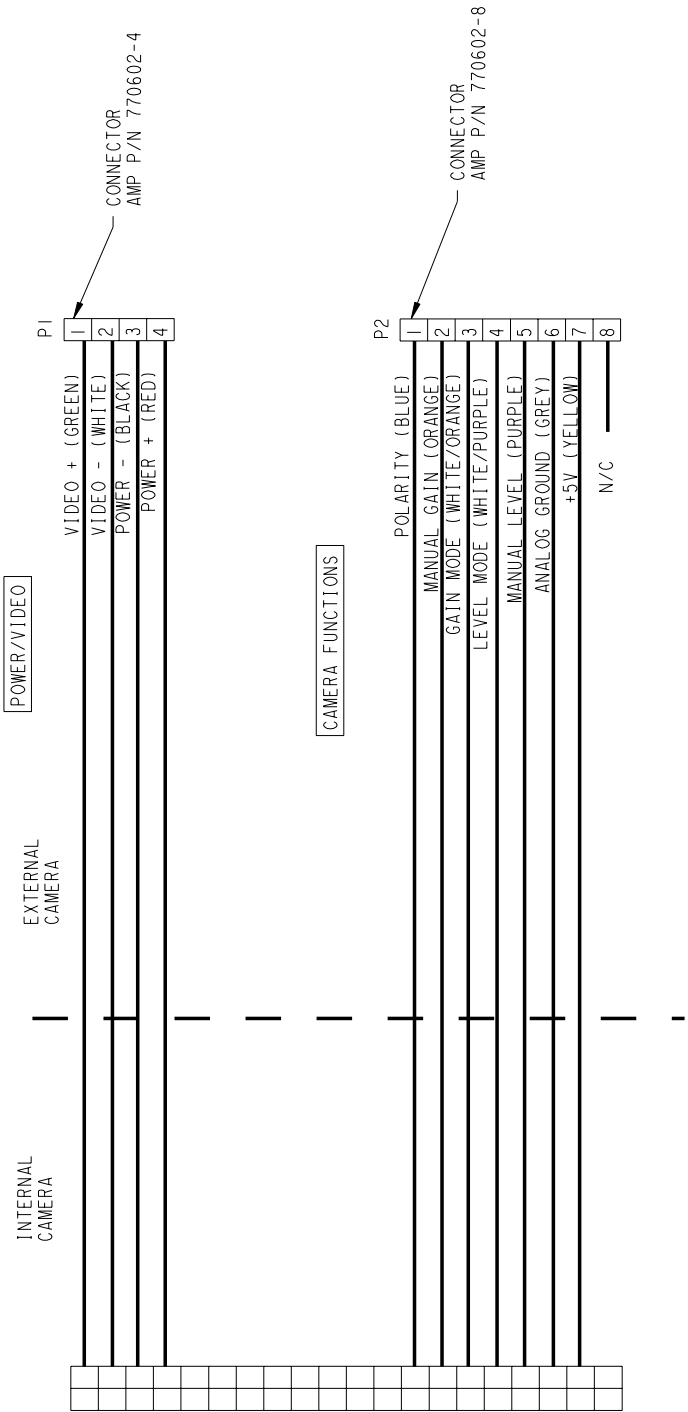
NOTES

- CAUTION
1. ELECTRICAL GROUND (INCLUDING VIDEO GROUND) IS CONNECTED TO THE CAMERA CASE INSIDE THE CAMERA . WHEN MOUNTING THE CAMERA, ENSURE THAT THE CAMERA CASE IS EITHER A OR B:
A. ELECTRICALLY ISOLATED
B. ELECTRICALLY CONNECTED TO "POWER RETURN" (BLACK WIRE)
2. POLARITY CONTROL CAN BE ACCOMPLISHED BY USING A SINGLE POLE, SINGLE THROW SWITCH(SPST). THE SWITCH SHOULD BE CONNECTED AS SHOWN IN THE SCHEMATIC
3. THE GAIN AND LEVEL CONTROLS CAN BE ACCOMPLISHED BY USING A 10K POT/SPST SWITCH AS SHOWN IN SCHEMATIC. FOR MANUAL CONTROL OF GAIN CONNECT THE CIRCUIT SHOWN, CLOSE THE SWITCH, AND CONTROL GAIN WITH THE POT. FOR MANUAL CONTROL OF LEVEL, CONNECT THE CIRCUIT SHOWN, CLOSE THE SWITCH, AND CONTROL LEVEL WITH THE POT.
A RECOMMENDED PART IS THE SERIES 381 1W SINGLE POLE SINGLE THROW (SPST) 10K POTENTIOMETER FROM CLAROSTAT, P/N381NS-10K

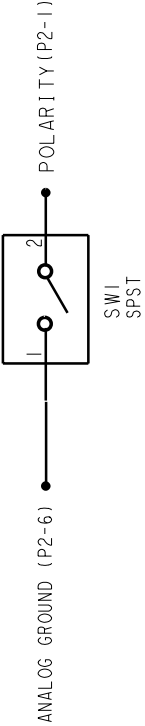


BOTTOM VIEW OF 10K POT
(CLAROSTAT 381NS-10K)

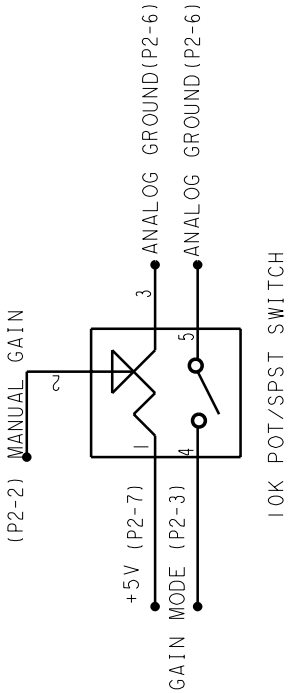
ELECTRICAL INTERFACE



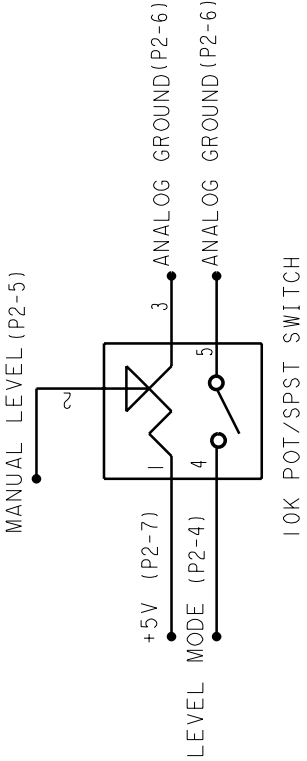
POLARITY CONTROL



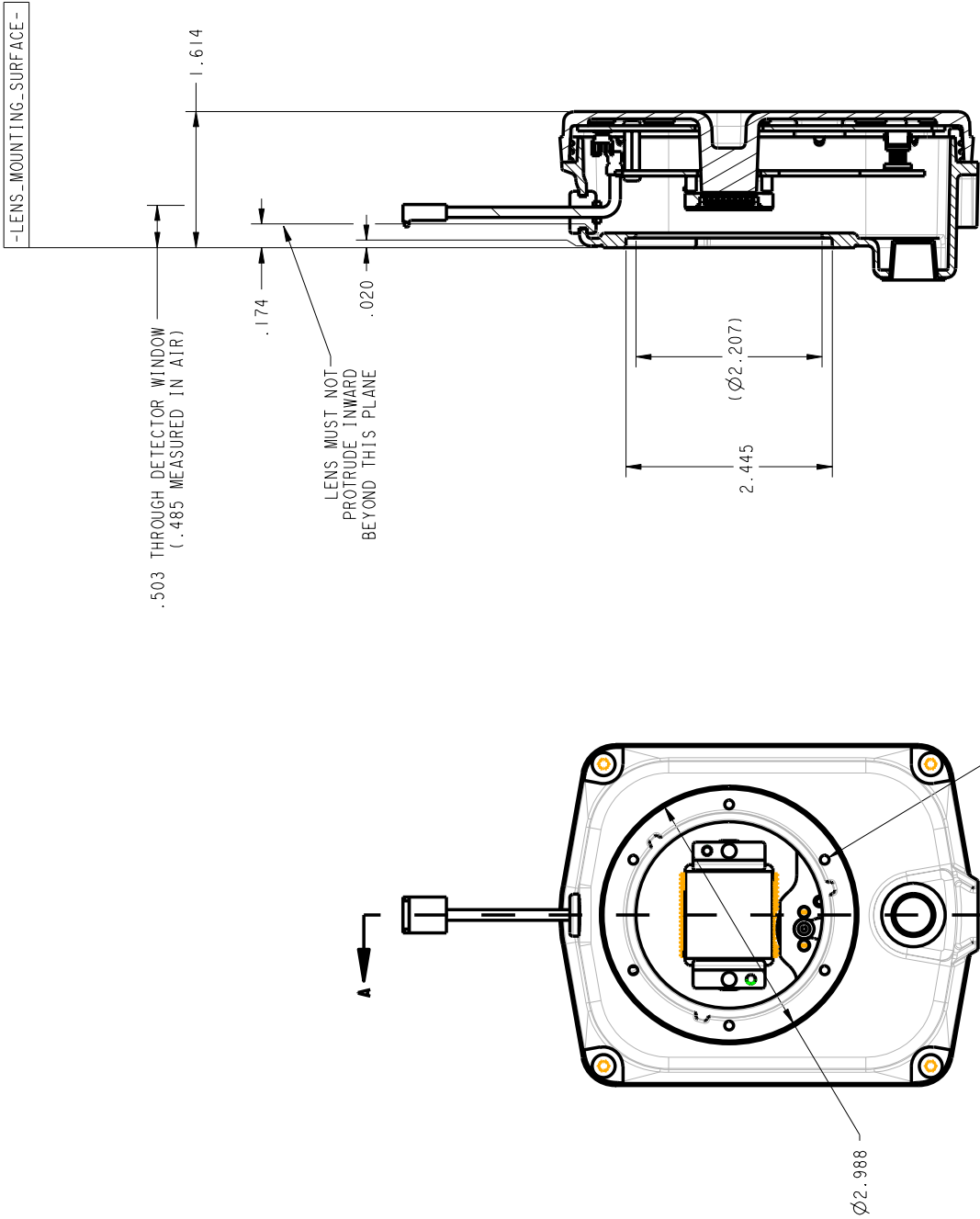
GAIN MODE/MANUAL GAIN ADJUST



LEVEL MODE/MANUAL LEVEL ADJUST



OPTICAL INTERFACE



SECTION A-A

RAYTHEON COMMERCIAL INFRARED DALLAS, TEXAS	DWN	DATE	DATE	SCALE	SCALE	DRAWING NO	REV
	D 10235	1/1	1/1	1/1	1/1	SI 3261544	4

8	7	6	5	4	3	2	1
8	7	6	5	4	3	2	1